



Croixdale

The Terrace

Senior Apartments

Welcome to Croixdale

At Croixdale, your ideal residence is complemented by an assortment of conveniences and amenities to enrich your life.

Enjoy maintenance-free living and comfortable, convenient floor plans. Regardless of which plan you choose, it's sure to reflect your sense of style as you add your own personal touch.

Included Amenities

- Choice of one meal daily, served restaurant-style
- Monthly light housekeeping
- Utilities (heat, electric, central air conditioning, water, sewer, and trash)
- Telephone service, including long distance
- Basic cable television service
- Open public Wi-Fi in designated common areas
- Health and wellness clinic
- Wings® wellness intellectually stimulating programs, spiritual care services, group fitness classes, fitness center, volunteer opportunities
- Pastoral care
- Designated complimentary transportation to shopping and outings
- Access to the Town Center amenities
- Controlled entrance
- Monitored smoke detector
- Lawn care and snow removal
- Month-to-month residency agreement
- Property tax and building insurance
- Apartment and building maintenance
- Priority access to other Presbyterian Homes & Services living and care options based on availability
- Smoke-free community

Other Conveniences

Additional fees may apply

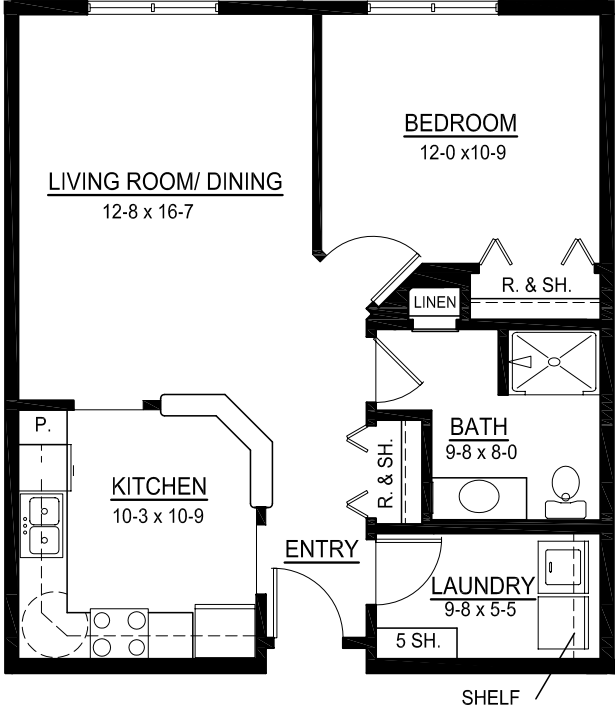
- Heated underground parking garage with car wash bay
- Additional meals
- Guest dining
- Guest suite
- Additional housekeeping services
- Home care and hospice services available through Optage®
- Catering



Sample Floor Plans

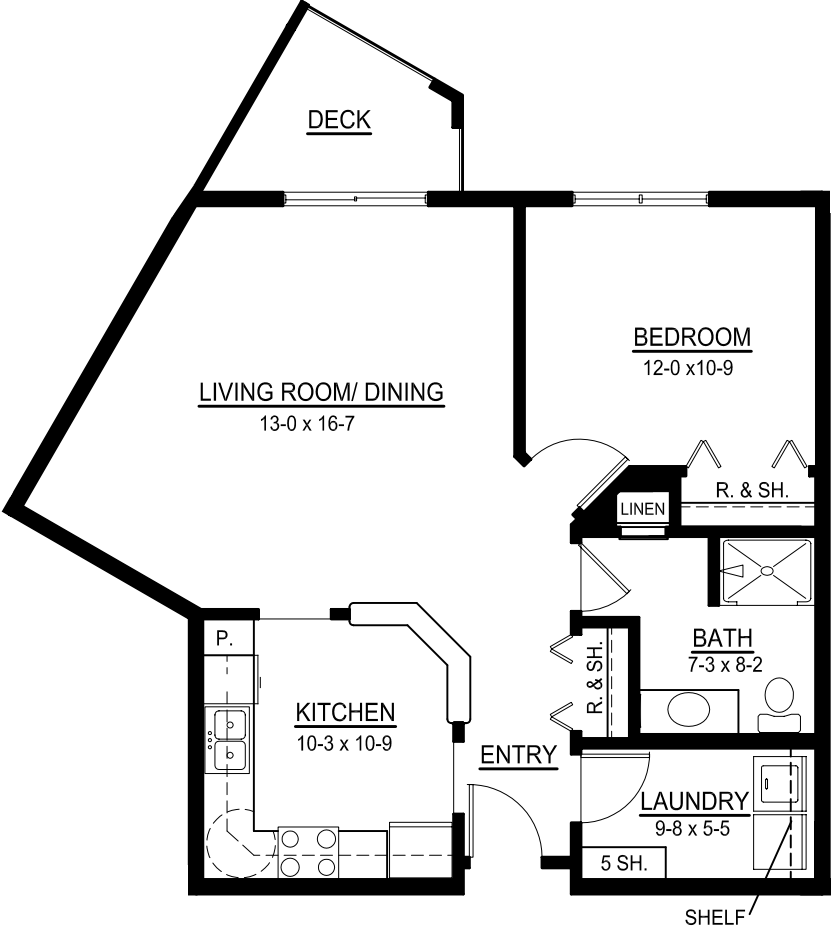
Bun Hersey

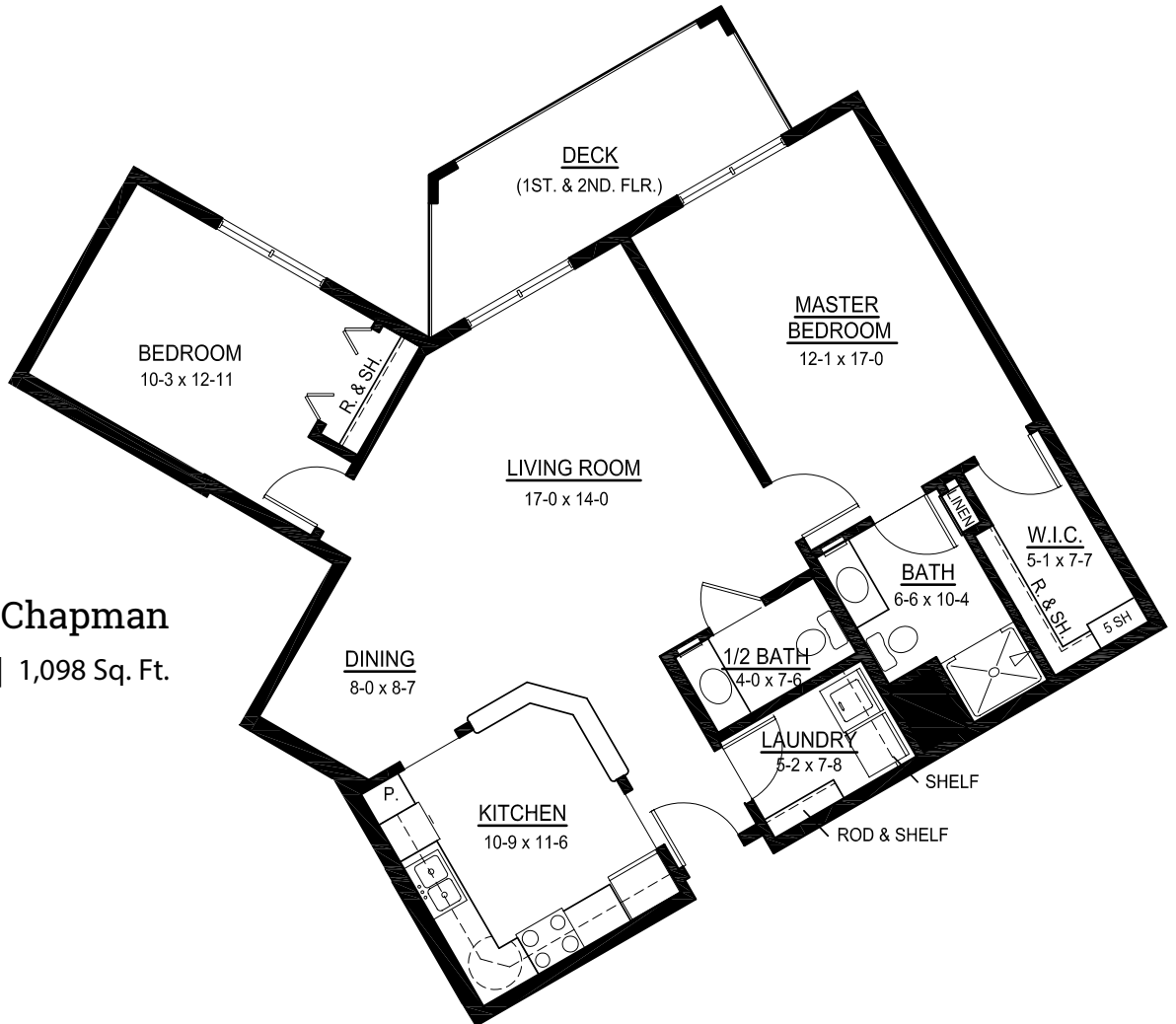
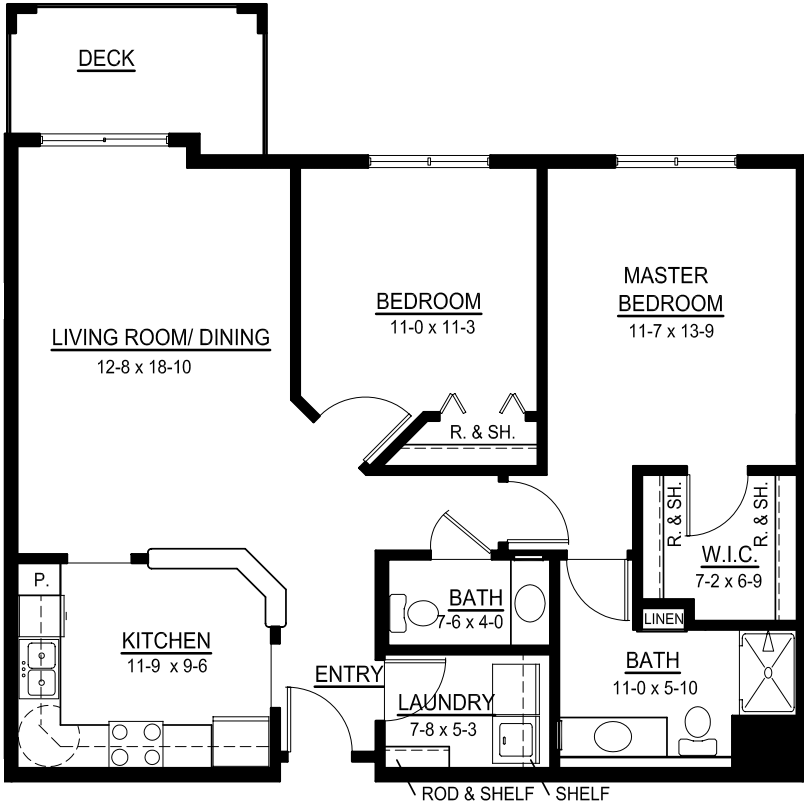
One Bedroom | 692-703 Sq. Ft.
Many with Deck



David Bronson

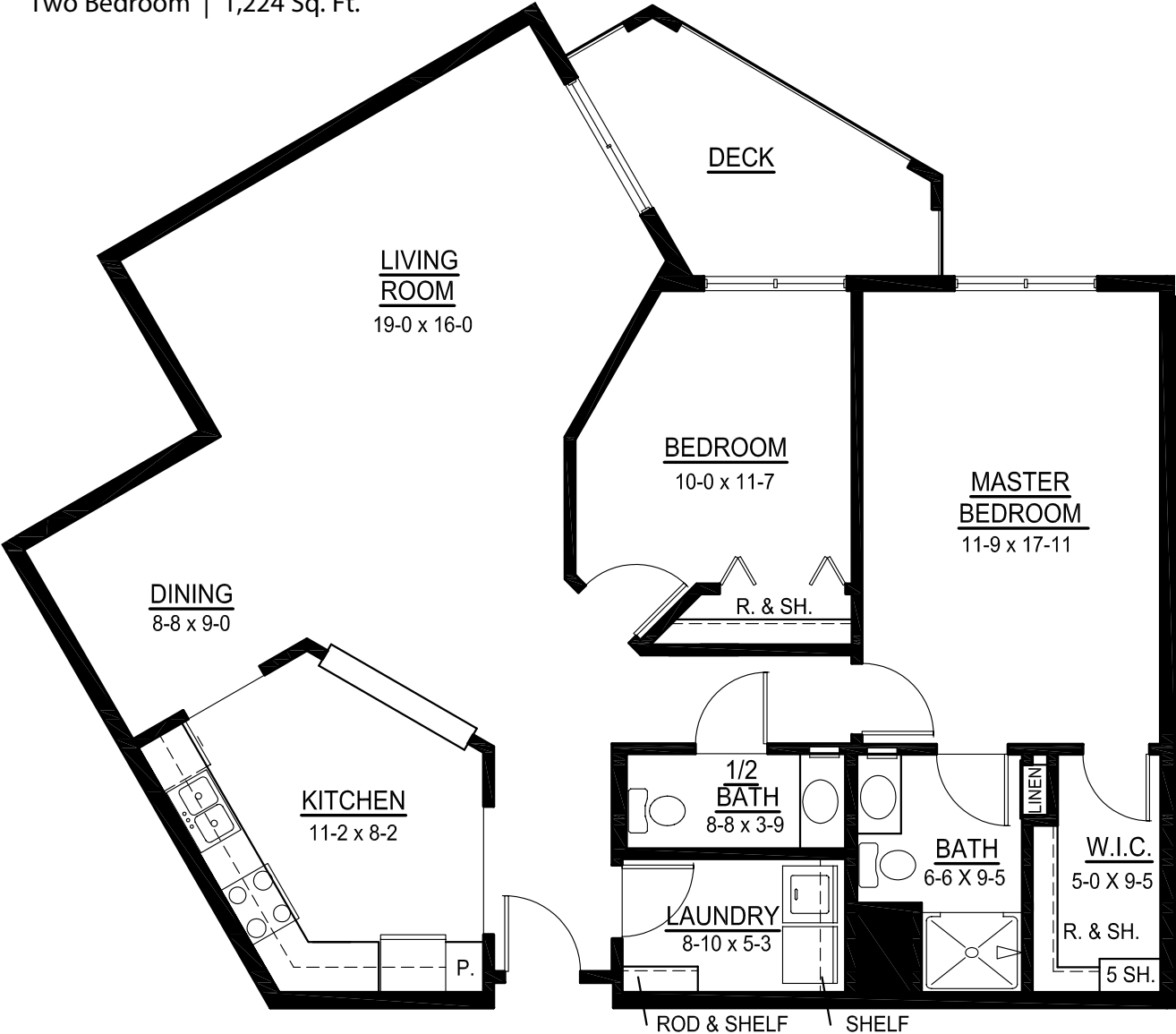
One Bedroom | 762 Sq. Ft.





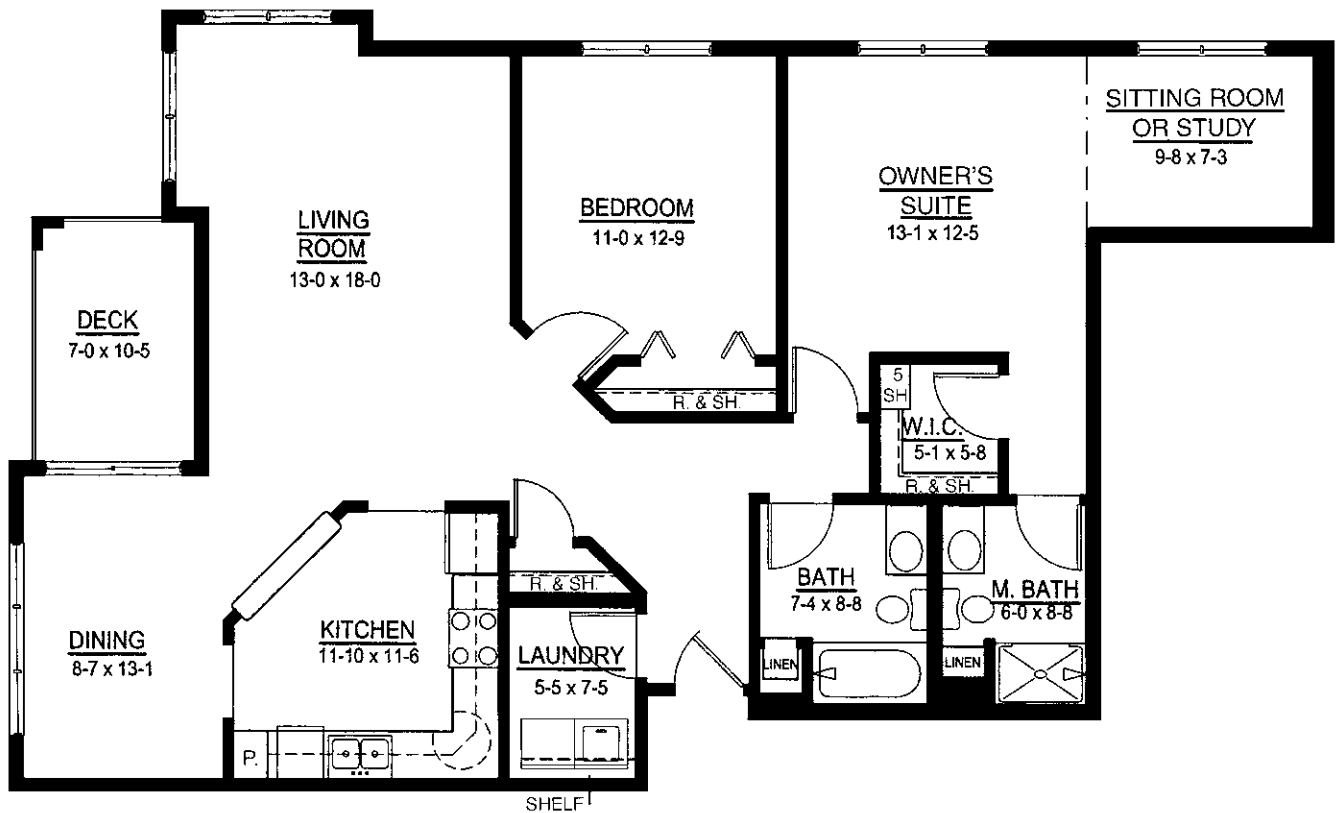
Lady Grace

Two Bedroom | 1,224 Sq. Ft.



Nellie Kent

Two Bedroom/Study | 1,235–1,300 Sq. Ft.



Floor plans, features and amenities are subject to change without notice. Stated dimensions and square footage are approximate. Additional floor plans may be available. Please ask about availability.

Our senior apartments offer maintenance-free living and comfortable floor plans with value and convenience. Nicely appointed common areas are well-suited for group events and casual gatherings. Social, recreational and volunteer opportunities help create a sense of community.

Distinctive Details

- Bright open floor plans
- Fully equipped kitchens with oak cabinetry
- Convenient in-home laundry with full size washer and dryer
- Individually controlled heat and central air conditioning
- Many plans offer decks

Monthly Rental Fee

Apartment	Sq. Ft.	Rate
One Bedroom	692-762	\$1,910-\$2,080
Two Bedroom	1,000-1,300	\$2,615-\$3,365



Pricing subject to change. Residency agreement available upon request.



651-275-4800

750 Highway 95 North
Bayport, MN 55003

Croixdale.org

Living Options

- Senior apartments
- Assisted living apartments
- Assisted living memory care residences

Due to COVID-19 or other future circumstance, some features may be temporarily unavailable or offered in a different way. We anticipate features will become available in original form once it is prudent to do so. Presbyterian Homes & Services (PHS) communities comply with applicable federal civil rights laws and do not discriminate on the basis of race, color, national origin, age, disability or sex.

PresHomes.org

Español (Spanish): *Llame al 1-844-558-6125*

Hmoob (Hmong): *Hu rau 1-844-558-6125*

Tagalog (Filipino): *Tumawag sa 1-844-558-6125*

Professional management by PHS Management, LLC © 2021 Presbyterian Homes and Services
All faiths welcome. Equal housing opportunity.