



Dickson Hollow

Senior Apartments

Welcome to Dickson Hollow

At Dickson Hollow, your ideal residence is complemented by an assortment of conveniences and amenities to enrich your life.

Enjoy maintenance-free living and comfortable, convenient floor plans. Regardless of which plan you choose, it's sure to reflect your sense of style as you add your own personal touch.

Included Amenities

- Utilities (heat, electric, central air conditioning, water, sewer, and trash)
- Open public Wi-Fi
- Controlled entrance
- Basic cable television service
- Designated complimentary transportation to shopping and outings
- Health and wellness clinic
- Pastoral care
- Wings® wellness intellectually stimulating programs, spiritual care services, group fitness classes, fitness center, volunteer opportunities
- Property tax and building insurance
- Apartment and building maintenance
- Lawn care and snow removal
- Priority access to other Dickson Hollow and Presbyterian Homes & Services living and care options based on availability
- Month-to-month residency agreement
- Access to Town Center amenities and programs
- Smoke-free community

Other Conveniences

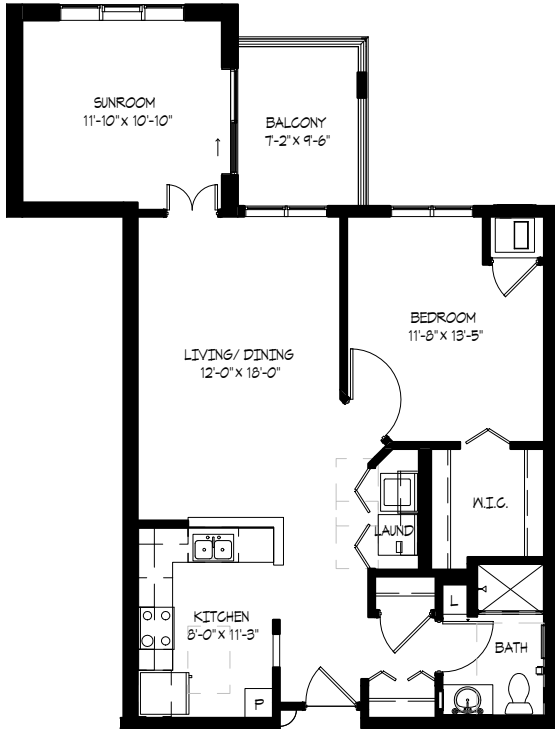
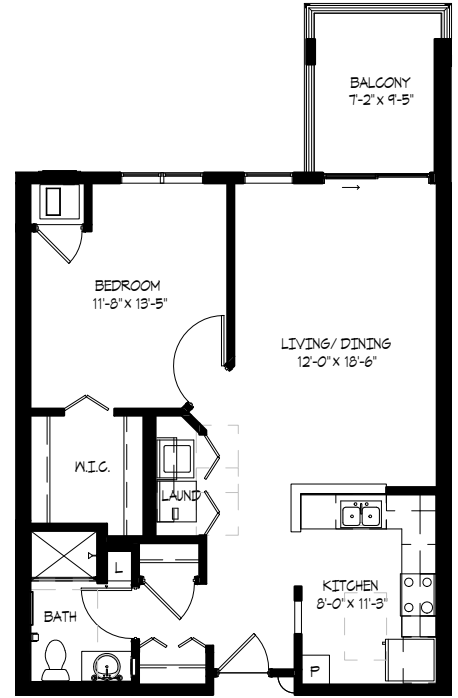
Additional fees may apply

- Underground heated parking
- Restaurant-style dining
- Additional storage
- Telephone service
- Transportation for shopping and outings
- Guest suites
- Guest dining
- Pets are welcome (guidelines apply)
- Outpatient therapy — physical, occupational and speech therapy

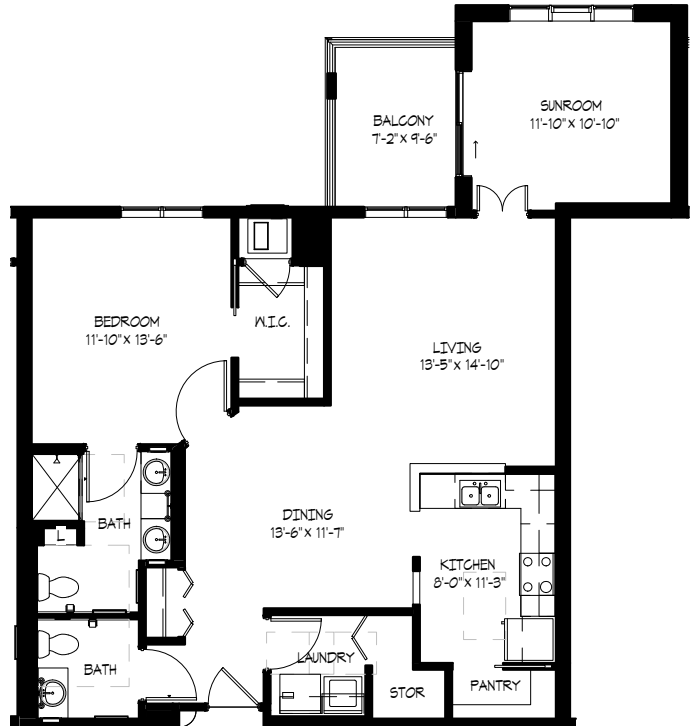


Sample Floor Plans

Big Manitou
One Bedroom | 760 Sq. Ft.

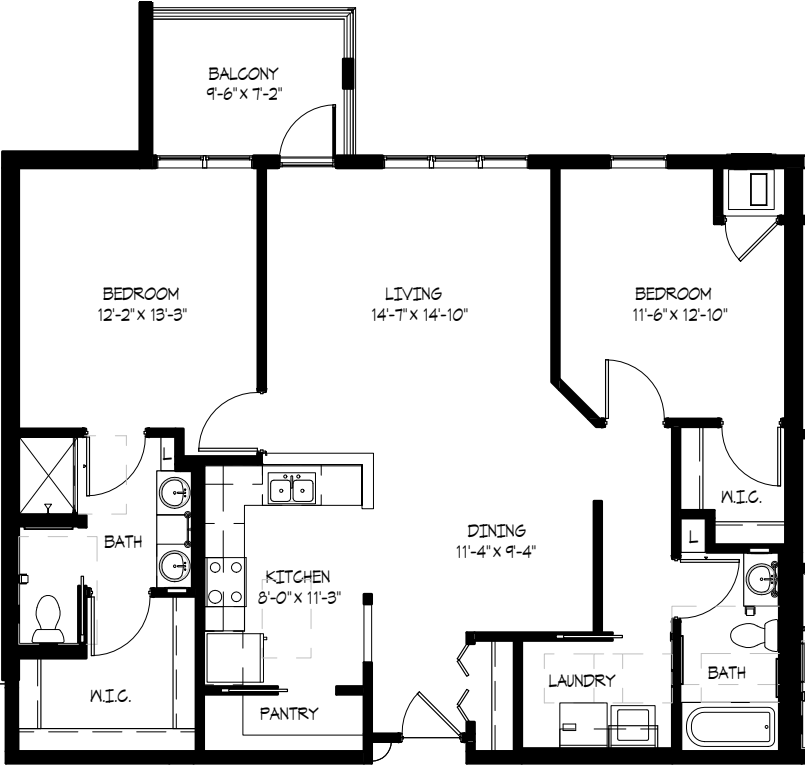


Foster
One Bedroom/Sunroom | 915 Sq. Ft.



Morgan
One Bedroom/Sunroom | 1,125 Sq. Ft.

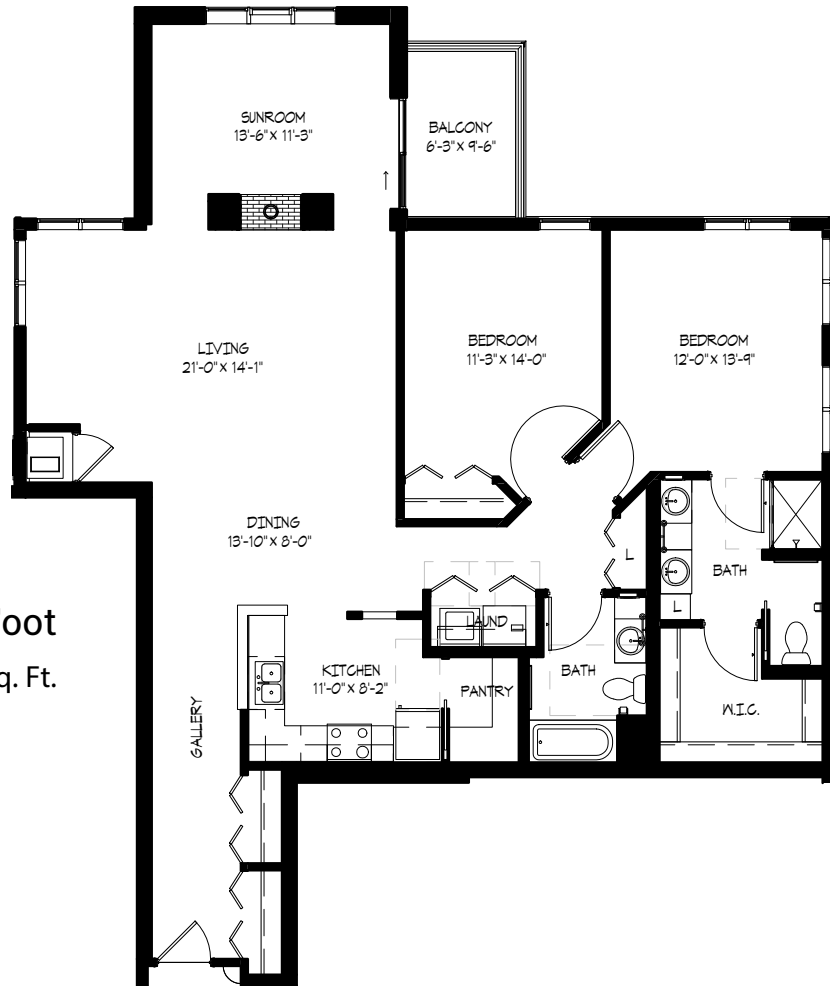
Piers Gorge
Two Bedroom | 1,220 Sq. Ft.



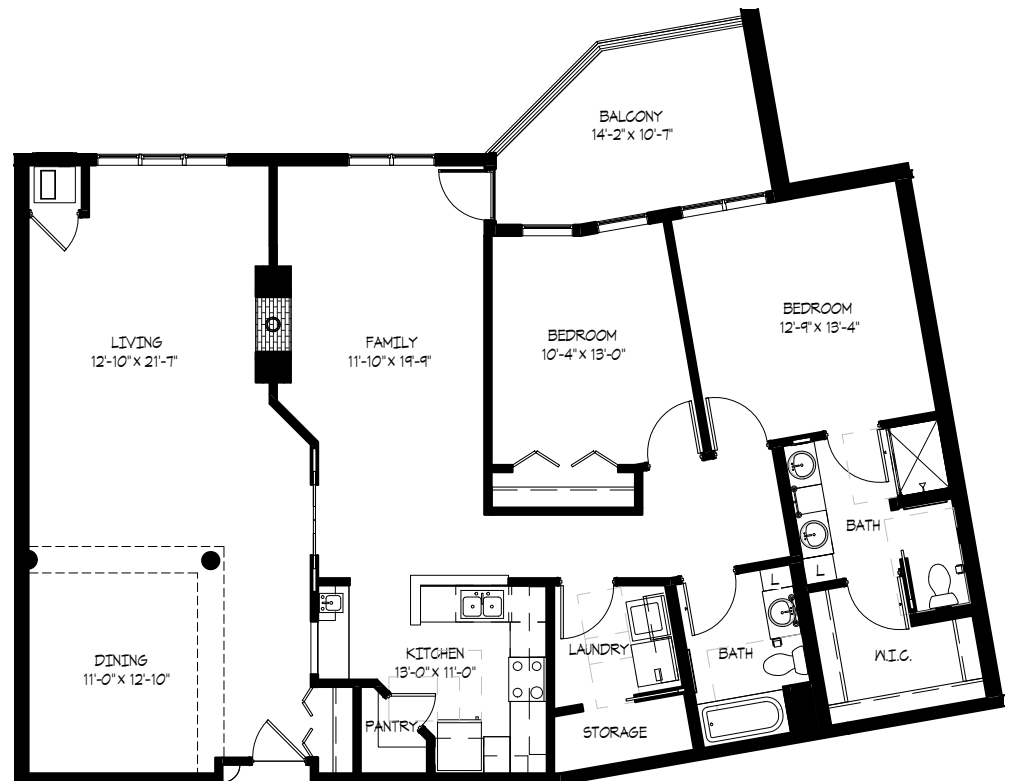
Spring Camp
Two Bedroom | 1,405 Sq. Ft.



Twelve Foot
Two Bedroom/Sunroom | 1,590 Sq. Ft.

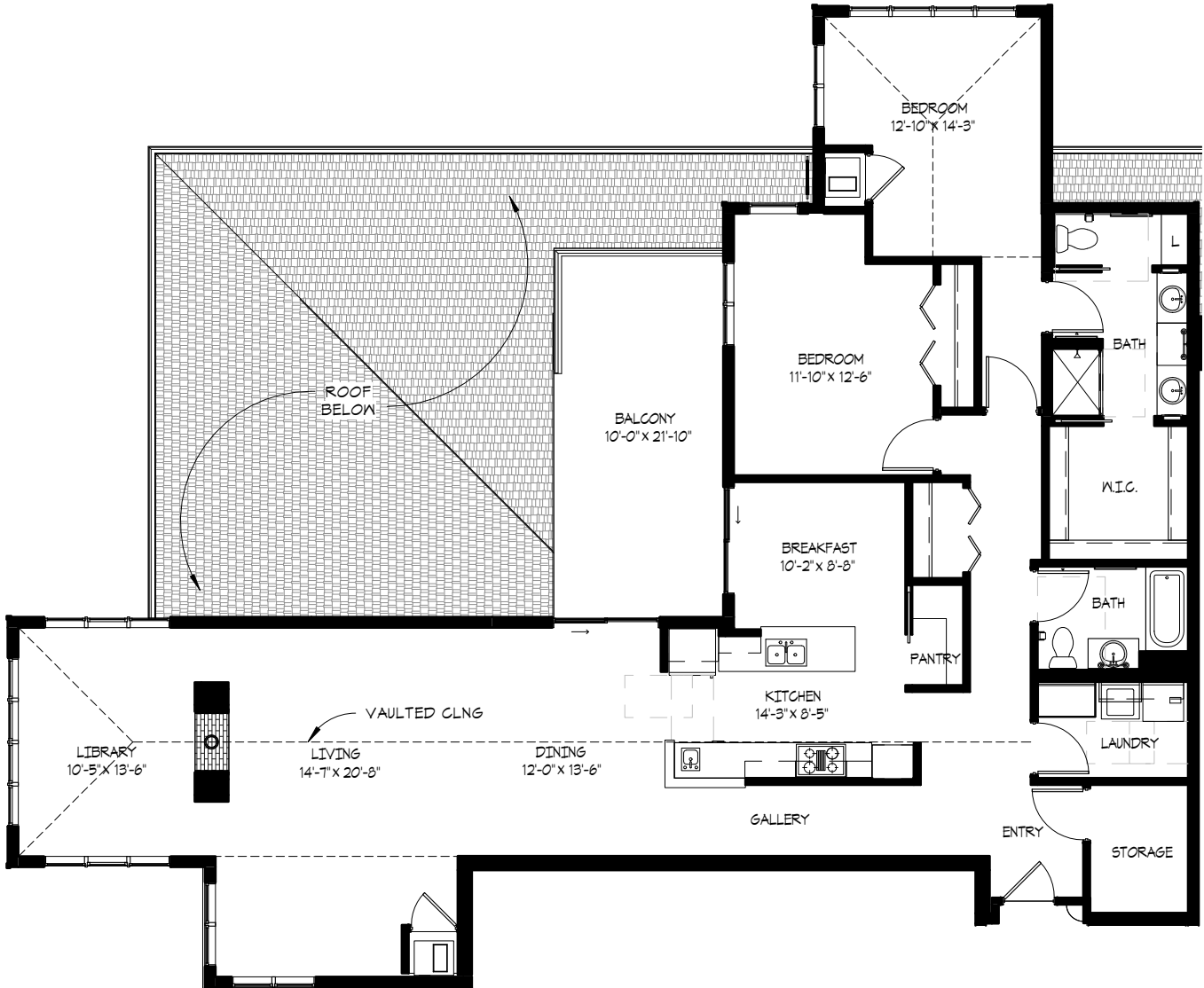


Upson
Two Bedroom/Family Room
1,740 Sq. Ft.



Wren

Two Bedroom/Library | 2,020 Sq. Ft.



Floor plans, features and amenities are subject to change without notice. Stated dimensions and square footage are approximate. Additional floor plans may be available. Please ask about availability.

Our senior apartments offer maintenance-free living and comfortable floor plans with value and convenience. Nicely appointed common areas are well-suited for group events and casual gatherings. Social, recreational and volunteer opportunities help create a sense of community.

Distinctive Details

- Bright, open floor plans with spacious rooms and nine foot ceilings
- Fully equipped kitchens with refrigerator, stove/self-cleaning oven, dishwasher, garbage disposal and microwave
- Thoughtfully-designed bathroom with step-in shower and/or tub and shower
- Blinds on all windows and patio doors
- Birch cabinetry with a medium cherry finish
- In-home laundry with full size washer and dryer
- Individually controlled heat and central air conditioning
- Walk-in closets
- Apartments include a private patio or balcony

Monthly Rental Fee

Apartment	Sq. Ft.	Rate
One Bedroom	760-1,125	\$2,320-\$3,440
Two Bedroom	1,180-2,020	\$3,605-\$5,460



Pricing subject to change. Residency agreement available upon request.



262-599-8300

W156N4881 Pilgrim Road
Menomonee Falls, WI 53051

DicksonHollow.org

Living Options

- Senior apartments
- Assisted living apartments
- Memory care residences

Due to COVID-19 or other future circumstance, some features may be temporarily unavailable or offered in a different way. We anticipate features will become available in original form once it is prudent to do so. Presbyterian Homes & Services (PHS) communities comply with applicable federal civil rights laws and do not discriminate on the basis of race, color, national origin, age, disability or sex.

PresHomes.org

Español (Spanish): *Llame al 1-844-558-6125*

Hmoob (Hmong): *Hu rau 1-844-558-6125*

Tagalog (Filipino): *Tumawag sa 1-844-558-6125*

Professional management by PHS Management, LLC © 2021 Presbyterian Homes and Services
All faiths welcome. Equal housing opportunity.

9/23 

 **presbyterian
homes & services**
freedom to live well®