



MAINSTREET VILLAGE

Memory Care



MAINSTREET VILLAGE
OF RICHFIELD

Welcome to Mainstreet Village

Memory care provides a vibrant neighborhood setting where dedicated staff serve the unique needs of each individual with warmth and compassion. Stimulating activities and personalized care assure families their loved one has the opportunity to live life to the fullest.

We believe that caring for the needs of those with dementia grants us an extraordinary opportunity for ministry. Our DOVE™ program is the culmination of many years of thoughtful consultation with staff, families, and leaders in the field of dementia research. DOVE™—Dementia Orientation Values Education—is a three-part approach to care that allows your loved one to receive the affirmation and reassurance they need.

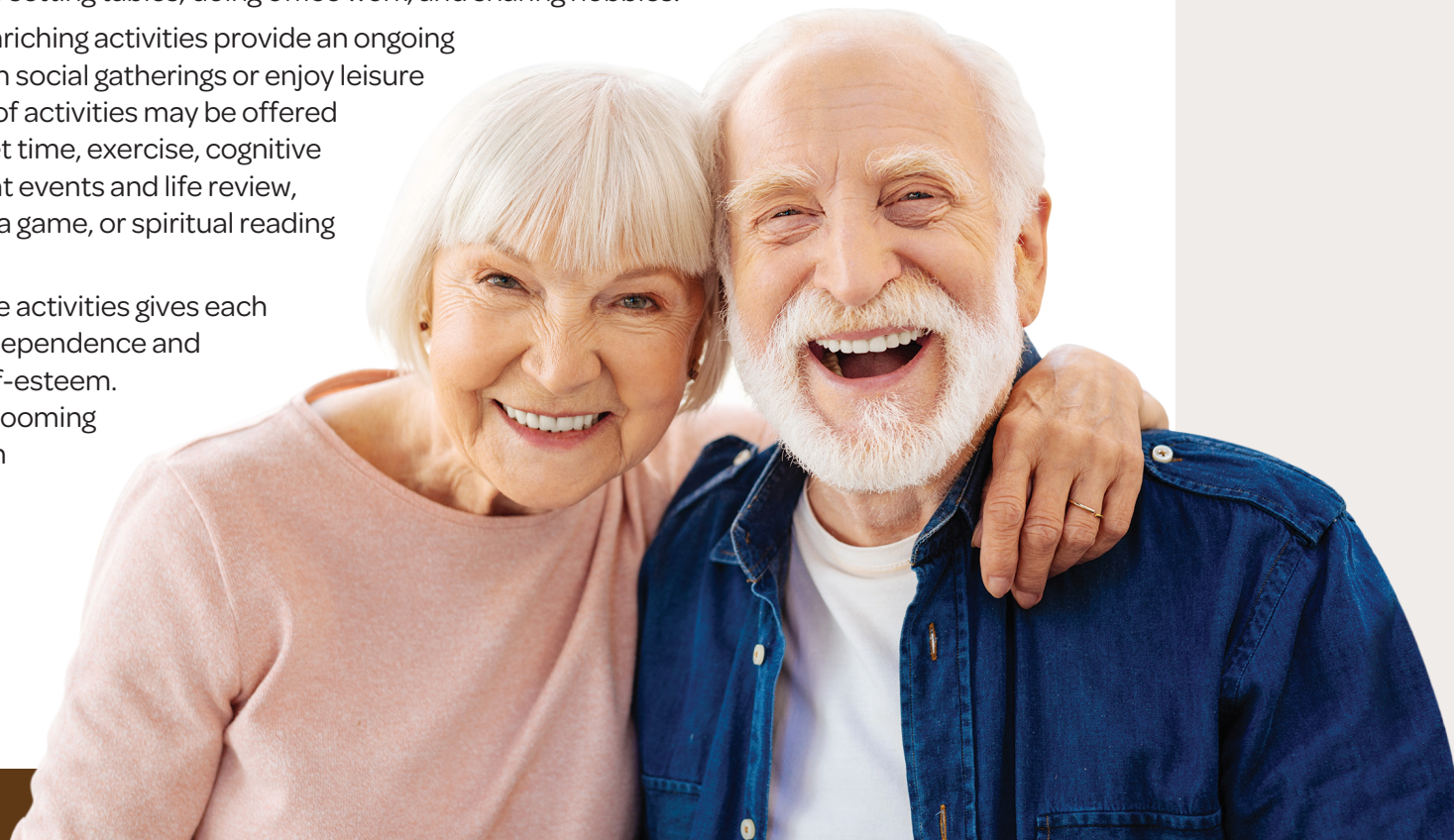
Our dove lapel pin designates staff that have completed special training. The dove, a symbol of the Holy Spirit, symbolizes how each person is fully remembered by Him. Even with loss of memory, the spirit remains intact.

The DOVE™ Program

We begin by assessing individual needs and creating a plan of care, and continue by supporting resident life-skills as well as involving and providing guidance to families. Encouraging independence and providing a sense of purpose, enjoyment, and success are our guiding principles.

Activities and specialized programming in three main areas are essential: life-skills, life-enrichment, and self-care.

- Life-skill activities help recall the person's various roles in life. Some examples include setting tables, doing office work, and sharing hobbies.
- Recreational and life-enriching activities provide an ongoing opportunity to engage in social gatherings or enjoy leisure activities. A wide range of activities may be offered such as leisure and quiet time, exercise, cognitive stimulation from current events and life review, baking, reading, playing a game, or spiritual reading and prayer.
- Participation in self-care activities gives each individual a sense of independence and pride and enhances self-esteem. Bathing, dressing and grooming are examples of cares in which each resident is encouraged to assist.



Memory care strives to ensure the comfort and convenience of residents and their families. From our inclusive amenities to comprehensive care options, families gain peace of mind knowing their loved one has support with all the comforts of home.

Included Amenities

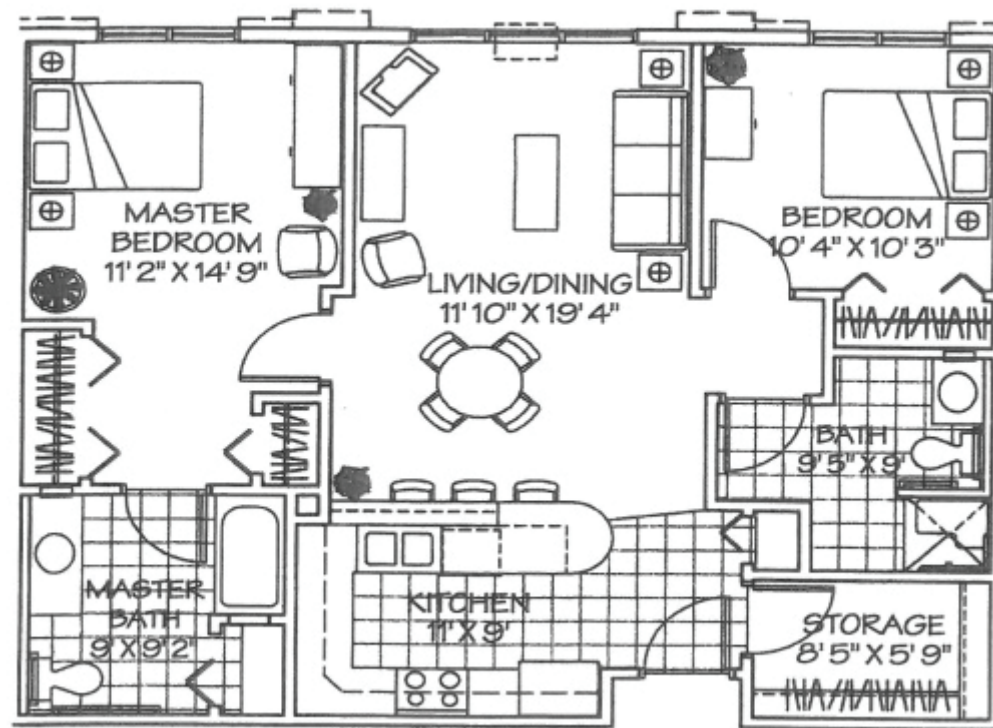
- Individual personalized care plans and programming assessment
- Specially trained, 24-hour homecare staff
- Nurse on-site during business hours
- Nurse on call evenings and weekends
- Monthly vital sign monitoring
- Hourly safety checks at night from 10pm-6am
- Non-behavior, basic redirection and cuing
- Medication management (up to 12 medications)
- Morning and evening cares
- Bathroom assistance
- Assistance with one shower per week
- Weekly housekeeping & weekly linen service
- Daily room tidy
- Personal laundry service
- Reminders and escorts to meals and programs
- Three meals each day
- Snacks offered throughout the day
- Heat, water, electricity, air conditioning
- On-site Chaplain

Other Conveniences

Additional fees may apply

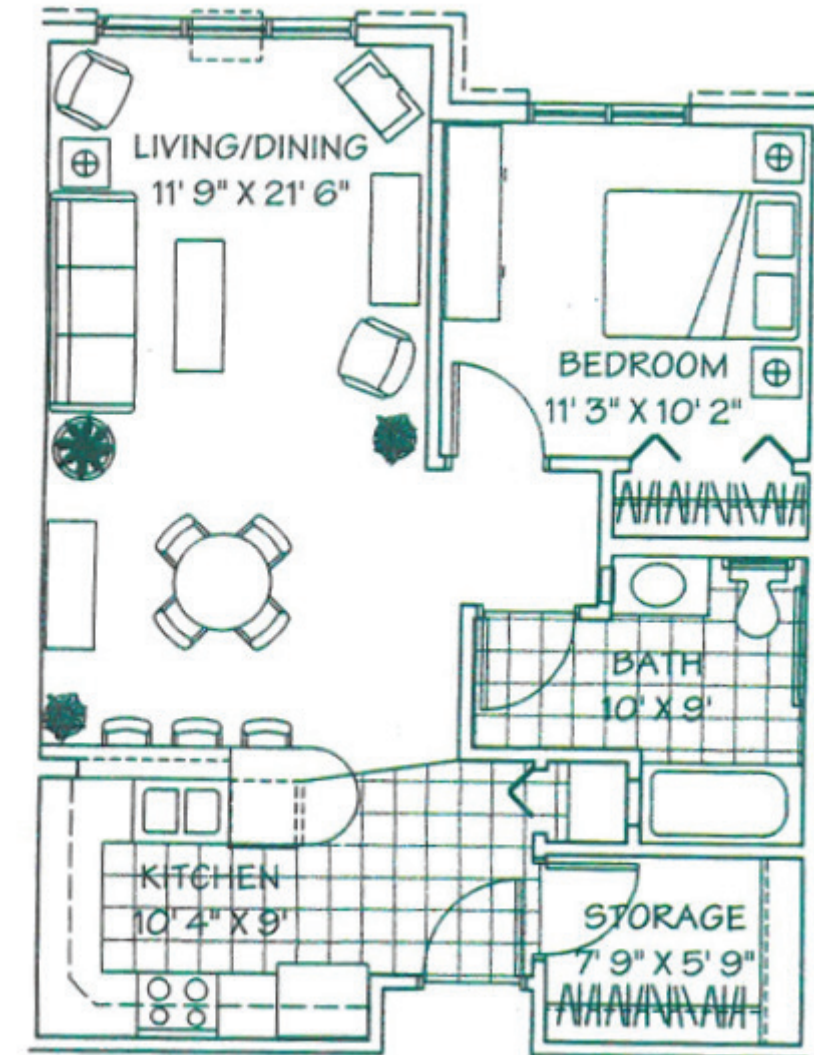
- Assistance with arranging transportation to medical and social service appointments
- Assistance with accessing community resources and social services
- Access to designated Physician or Nurse Practitioner for on-site services
- Coordination of specialized nursing and therapy visits (physical, speech and occupational)
- Additional home care and hospice services available through Optage®
- Additional loads of laundry
- Additional housekeeping
- Handyman
- Guest dining
- Beauty/barber

Sample Floor Plans



Shared Suite or Private Two-Bedroom/Two-Bath

1,041 Sq. Ft.



Private Suite

724 Sq. Ft.

Assisted Living Service Fee

In addition to the monthly rental fee, a monthly assisted living services fee is required based on the amount of care provided.

A nurse will meet with you to complete an initial assessment and make a recommendation of services that could be provided to meet your needs. Our care staff has ongoing training, coaching and mentoring, based on dementia specific training guidelines, to provide the knowledge and expertise needed to ensure a successful relationship.

Personal Care rates effective April 2022.

At Mainstreet Village, we know each individual is just that—an individual. And our services reflect that philosophy. Select from a broad range of options depending on your personal preferences. It's all based on the principle of choice.

And the choice is yours.

Memory Care Monthly Investment:

Base Monthly Home Care Services Package + Rent

Apartment	Rate
Shared Suite/Side A	\$5,735 + \$1,165 = \$6,900
Shared Suite/Side B	\$5,735 + \$1,100 = \$6,835
Private One-Bedroom Suite	\$5,735 + \$1,685 = \$7,420
Private Two-Bedroom, Two-Bath	\$5,735 + \$2,295 = \$8,030

The above price includes up to 100 hours of intermittent care per month.

Additional fees may apply upon completion of nurse assessment and/or resident review.





612-869-6584

7601 Lyndale Avenue South
Richfield, MN 55423

[MainstreetVillageSeniorLiving.org](https://www.MainstreetVillageSeniorLiving.org)

Living Options

- Senior Apartments
- Assisted Living
- Memory Care

Due to COVID-19 or other future circumstance, some features may be temporarily unavailable or offered in a different way. We anticipate features will become available in original form once it is prudent to do so. Presbyterian Homes & Services (PHS) communities comply with applicable federal civil rights laws and do not discriminate on the basis of race, color, national origin, age, disability or sex.

[AvinitySeniorLiving.org](https://www.AvinitySeniorLiving.org)

Español (Spanish): Llame al 1-844-558-6125
Hmoob (Hmong): Hu rau 1-844-558-6125
Tagalog (Filipino): Tumawag sa 1-844-558-6125



Professional management by Avinity. Avinity is a shared ministry of The Avinity Foundation and Presbyterian Homes & Services. © 2022 Avinity. All faiths welcome. Equal housing opportunity.



9/22